



## WASHBURN RURAL HIGH SCHOOL

# JUNIOR BLUES NEWSLETTER



## FEATURED STORY

### ENROLLMENT

Auburn-Washburn has created a way to make back-to-school time easier for parents. Parents can log in to their [Infinite Campus \(IC\)](#) portal account and begin the process. This is the same online tool that parents use to check grades, manage fees, etc. Parents of returning students who have not yet established an IC account can find instructions at the same link.

Parents of students new to the district can go through OLR without a portal account by using the link from the district home page ([www.usd437.net](http://www.usd437.net)). New students will need to provide immunization records, birth certificate, and proof of residency before they can be enrolled. These documents can be provided throughout the summer at the administrative office or during an enrollment session.

## TABLE OF CONTENTS

Principal's Letter  
Counseling Office  
Registration Information  
Enrollment Information  
Administrative Notes  
Athletics and Activities  
Career and Technical Education  
-DECA  
-WRHS Bank  
-Common Grounds  
-The Shack  
Yearbook  
Media Center  
PTO Blues Backers  
School Calendar

# From the Desk of Our Principal



Welcome Back!

On behalf of the staff and administration of Washburn Rural High School, I am excited to extend to you our best wishes for a productive and exciting new school year. Let me assure you that the educational opportunities for students at WRHS are excellent, both by reputation and by the measured accomplishments of our students.

We enjoy one of the best reputations of any public high school in the State of Kansas! Last year, for example, we produced four National Merit Finalists or Semi-Finalists, and two National Merit Commended Scholars! Additionally, once again we were named one of the Best High Schools in America by US News and World Report!

For those of you following the life of our school, you're likely aware of the incredible athletic and extracurricular success we experienced last year. We were City Champions in Boys' Cross Country, Girls' Cross Country, Girls' Golf, Boys' Swim, Boys' Bowling, Boys' Tennis, Boys' Golf, Girls' Swim, and both Boys' and Girls' Track. We also captured Centennial League Championships in Boys' Soccer, Volleyball, Girls' Cross Country, Girls' Bowling, Boys' Basketball, Girls' Soccer, Softball, and Boys' Tennis. Our teams earned Regional or Sub-State Championships in Girls' Tennis, Volleyball, Boys' Soccer, Girls' Cross Country, Girls' Bowling, Boys' Bowling, Girls' Basketball, Boys' Basketball, Softball, Baseball, Girls' Soccer, and Boys' Tennis. Girls' Soccer went on to win their first-ever State Championship, while our Softball team and the Dancin' Blues each finished as KSHSAA State Runners-Up. We also celebrated three individual State Champions in Boys' Wrestling—Landen Kocher-Muñoz (138 lb.), Easton Broxterman (144 lb.), and Kristjan Marshall (157 lb.)—and three State Champion performances from our Track Team: the Boys' 4x400 Relay (Isaiah Terry, Liam Morrison, Draden Chooncharoen, and Matthew Houser), Isaiah Terry in the 400m, and Liam Morrison in the 300m Hurdles. Coaching excellence was also recognized, with multiple coaches earning City or League Coach of the Year honors.

Our extra-curricular and co-curricular programs flourished throughout the year, with the Music Department showcasing excellence at every turn. Jazz I earned top honors at multiple festivals, and the Wind Ensemble received unanimous "I" ratings at the KSHSAA Large Ensemble Festival. Orchestra students also impressed, with both the Chamber and Symphony Orchestras earning Superior ratings at the State Large Group Festival. Altogether, the department amassed 87 Superior ratings at Regional Solo/Ensemble events and concluded the year with memorable performances at Stringfest and the Awards Concert. At the State Large Group Music Festivals, the WRHS Chorale, Chamber Orchestra, Symphonic Orchestra, and Wind Ensemble all received top ratings. Notably, the Chorale also engaged in two distinguished collaborations—a fall coaching session with the world-renowned Chanticleer ensemble and a joint spring performance with the Augustana College choir.

The WaRu Theatre program also continued to uphold a standard of excellence both on and off the stage. In addition to a full season of performances, the program celebrated numerous accomplishments at both the district and state levels. Thespian Troupe #6193 was honored as one of only 33 schools in Kansas to receive the Gold Honor Troupe designation. At the Kansas Thespian Conference, twenty-one students competed in the Thespy competitions, with thirteen earning Superior ratings and qualifying for international competition. In a historic milestone, Weston Widman became the first student in the region to be selected as a Kansas State Thespian Officer. WaRu Theatre also prioritized community engagement. The Blues Studio Players toured local elementary schools—Farley, Indian Hills, and Wanamaker—sharing their musical production with the entire 8th grade. In total, they reached over 1,500 students across the district, inspiring the next generation of theatre enthusiasts.

During the 2024-2025 season, our debate and forensics squads won over four hundred awards at invitational tournaments across the state, including placing second in debate and third in forensics at the 6A state championship. We have 25 students qualified to the National Speech and Debate Tournament in Des Moines this June. Our speech and debate programs are ranked 5th in the nation for the Bruno E. Jacobs Trophy, an award given by the National Speech and Debate Association to the top school nationally.

The parents, staff, students and community which WRHS serves have much to be proud of. It was a truly exciting year!

In the coming year, I invite you to become a partner with us in your child's education, and in doing so, learn more about their "home away from home" - Washburn Rural High School. Attend their athletic events. Go to their concerts. Ask them about their school work. Talk with their teachers. Ask how you can volunteer in our building. By developing a deeper understanding of all that is available to your students at WRHS, you will help us to unlock the extraordinary potential within each one of them.

We look forward to the upcoming year with great hope and an unwavering belief in the promise of our young people. We wish all of you the very best! If we can ever be of service to you, please do not hesitate to call.

Best,

A handwritten signature in black ink that reads "Ed Raines". The signature is stylized, with the first letters of the first and last names being large and prominent.

Ed Raines, Principal  
raineedw@usd437.net

# WRHS Counseling Office

---

Counseling Website: [bit.ly/wrhscounselors](http://bit.ly/wrhscounselors)

Twitter Updates: [@wrhsgo](https://twitter.com/wrhsgo)

Crisis Hotline: 785-232-5005 or 988

## **2025-2026 Student Schedules**

Tentative student schedules will be viewable on Campus Portal in July. Counselors will be available during registration to make changes, fill gaps, etc. Counselors will not be making changes during the summer. During registration, counselors will be making first semester changes only. Second semester changes will be made in November and families should not stand in line during registration for a second semester request.

## **Shawnee County Suicide Prevention Resources**

This [resource guide](#) was created for residents in Shawnee County; it includes phone numbers and organizations to support children, teens, and adults.

## **NCAA Division 1 and 2 Worksheet**

Student athletes who are considering a D1 or D2 college need to ensure they have met the core curriculum NCAA requirements. This includes specific credits in core areas of English, math, science, social studies and world languages. This [WORKSHEET](#) provides details.

## **Transcript Requests**

Seniors: If you plan to attend a college (technical, two year, four year), a final high school transcript is required to enroll. Transcript requests are made via Naviance until June 30. Transcripts requested after June 30 will incur a fee and must be submitted through [www.parchment.com](http://www.parchment.com).

## **College Visits**

This summer, we encourage families to visit college campuses. This experience can help students set goals, make decisions, and understand the application process. Advice on planning a college visit can be found [here](#).

## **Class of 2026 College Applications**

Many colleges open applications in the summer. This can be a great way to get a head start on the process. A transcript can be downloaded from Campus Portal Documents. Eventually, the college will require an official transcript be sent; this process will be covered during advisory. If an essay is required for the application, we encourage students to wait until they can have it reviewed by a WRHS staff member in the fall.

## **ACT Exam**

National ACT: Students in the Class of 2026 who plan to attend college may need to take or retake the ACT in July, September and/or October. Families are encouraged to review current admission and scholarship requirements to determine whether the ACT is necessary for a particular college. Students can register at [www.act.org](http://www.act.org) for the ACT or [www.collegeboard.org](http://www.collegeboard.org) for the SAT. For colleges that use standardized testing in their process, both the ACT and SAT are accepted.

## **PSAT and State ACT**

The PSAT will be offered to the Class of 2027, 2028 and 2029 in October. The state-sponsored ACT will be offered to the Class of 2027 in March. Students will register for the PSAT and State ACT in August/September of 2025.

## **Summer Activities for High School Students**

Not sure how to spend your summer? The counseling website includes a list of local [volunteer opportunities](#). Interested in something besides volunteering? This [article](#) gives several ideas on ways to make the most of your summer.

## **Washburn University Concurrent Enrollment**

WRHS offers several concurrent enrollment courses including US History, Freshman Composition 1, Freshman Composition 2, College Algebra, Public Speaking, Biology, College Accounting, and Consumer & Personal Finance. Students must have a minimum 3.0 GPA; the course fee is around \$470 per class. For College Algebra, students must also achieve a score of 22 or higher on the ACT Math or take a placement test at WRHS. Students enrolled in College Algebra were invited to a Google Classroom regarding the math exam information.

# Registration Information

---

## Online Registration (OLR):

Auburn-Washburn has created a way to make back-to-school time easier for parents. Parents can log in to their [Infinite Campus \(IC\)](#) portal account and begin the process. This is the same online tool that parents use to check grades, manage fees, etc. Parents of returning students who have not yet established an IC account can find instructions at the same link.

Parents of students new to the district can go through OLR without a portal account by using the link from the district home page ([www.usd437.net](http://www.usd437.net)). New students will need to provide immunization records, birth certificate, and proof of residency before they can be enrolled. These documents can be provided throughout the summer at the administrative office or during an enrollment session.

Completing OLR prior to the enrollment sessions may greatly reduce the amount of time needed or eliminate the need to come to enrollment altogether, especially at the elementary level.

After completing the OLR, you will be notified by e-mail of the status of your registration and receive guidance if you will need to attend. Enrollment fees will be posted on your Infinite Campus account sometime during July, pending board approval. These can then be paid online at any time using a credit card, debit card, or bank account.

Online Registration should take 10 to 30 minutes depending on your situation, number of children, etc. The registration process can be stopped after you begin and resumed at a later time or day, without losing any of the data entered to that point.

To make the process easier, it would be good to have the following information at hand when you begin the process: special medical instructions or information the school needs to know about your child, physician's contact information, and your child's emergency contact information.

Assistance with Online Registration will be available throughout the summer by calling the OLR hotline at 339-4955 between 8:00 AM and 4:30 PM.

## Online Registration Quick Info:

- Parents of returning students can begin the process immediately through [Infinite Campus](#).
- Parents of returning students without IC accounts can contact their child's school.
- New students can go through the OLR process via [www.usd437.net](http://www.usd437.net) enrollment but will need to provide some documentation before enrollment is official.
- OLR should take 10-30 minutes.
- Enrollment fees will be posted to Infinite Campus on July 3rd pending board approval.
- An OLR hotline is available at 339-4955.

Please complete registration before you arrive, it does save time! If you are unable to complete online registration, computer stations will be available at enrollment.

Go online any time to register for school and reduce or eliminate your need for time at an enrollment session!

## Online Registration Open Now



# ◆ Enrollment Information

---

## New Families

Start the process at [www.usd437.net](http://www.usd437.net). Look for the Registration Link. New families must complete the registration and enrollment process by contacting their school.

## Returning Families

Log in to your [Campus Portal](#) account and go to the Inbox to get started.

## Completing the Process

After registering online you will receive e-mails confirming:

1. Submission of Online Registration
2. Acceptance of Registration

This message will let you know what you need to do, if anything, to complete the process.

Any paper forms or documents required to complete your registration may be submitted during enrollment sessions or during the summer at the Auburn-Washburn district office Monday-Thursday between 8:00 AM and 4:30 PM.

Free & Reduced meal applications can be downloaded online at [www.usd437.net](http://www.usd437.net) starting sometime in July.

Health forms and immunization requirements are available online at <https://usd437.net/about/health.html>.

Walk-in registration will be held July 30-31 between 7:00 a.m. - 7:00 p.m. at WRHS for ALL returning families to complete the process if needed and for all those who don't register online.

## Paying Fees

Fees can be paid online through your [portal account](#) starting sometime during July using credit/debit card or bank account. Fees can also be paid during enrollment sessions.

## Questions?

Assistance with Online Registration will be available throughout the summer by calling the OLR hot line at 339-4955 between 8:00 AM and 4:30 PM.

## Textbook Rental - \$125.00; Parking Permit - \$25.00

All fees are due at the time of enrollment. RETURNED CHECKS: Checks returned for any reason are sent directly to a collection agency-attorney for collection. A collection agency-attorney does add a service fee to the amount of the check. The total amount of the check and service fee may be electronically debited from your checking account by a collection agency-attorney.

## Student Parking Information

Properly licensed student drivers entering ALL grades have the opportunity to pre-purchase their parking permits. Students can either click on this link, [2025-2026 WRHS Student Parking Permit Application](#) or scan the QR code shown below. Students who submit the Google form by July 29th may pick up their permit during walk-in registration on July 30th-31st. The form can also be completed at any time during the school year, once the student is properly licensed with a minimum of either a restricted license or a farm permit. For more information on the Kansas Graduated Driver's License program, click on this link. [KS Graduated Driver's License Program](#). **Students must display a valid parking permit in their windshield at all times in order to park on campus during the regular school day.**



# Enrollment Information

---

## HEALTH INFORMATION FOR PARENTS 2024-2025

All students enrolling in USD 437 shall present or have on file certification from a physician or local health department stating that they have received the tests and inoculations that are deemed necessary by State law (KSA 72-5209). A student not having completed the necessary tests and inoculations may be excluded from school until the proper certification is obtained.

### REQUIRED IMMUNIZATIONS

1. Diphtheria, Tetanus, Pertussis (DTaP): five doses required. Four doses acceptable if dose 4 given on or after the 4th birthday. A single dose of Tdap is required at grades 7-12 if no previous history of Tdap vaccination regardless of the interval since the last TD.
2. Polomyelitis (IPV/OPV): four doses are required. Three doses acceptable. One dose required after age 4 regardless of the number of previous doses, with a 6 month minimum interval from the previous.
3. Measles, Mumps, Rubella: two doses required.
4. Hepatitis B: three doses required through grade 12.
5. Varicella (chickenpox): two doses required for grades K-12; unless history of varicella disease documented by a physician.
6. Haemophilus influenza type b (Hib): four doses required for children less than 5 years of age in early childhood programs. Total doses needed for series completion is dependent on the type of vaccine and the age of the child when doses given.
7. Pneumococcal conjugate (PCV): four doses required for children less than 5 years of age in early childhood programs. Total doses needed dependent on the age of the child when doses given.
8. Hepatitis A: two doses required for children less than 5 years of age. The first dose is given at 12 to 18 months of age, with a 6 month interval between the first and second dose.

### RECOMMENDED IMMUNIZATIONS (not required)

1. Meningococcal (MCV4): one dose recommended at 11 years with a booster at 16 years of age; not required for school entry.
2. Human Papillomavirus (HPV): three doses recommended for males and females at 11 years of age; not required for school entry.
3. Influenza: yearly vaccination recommended for all ages: >6 months of age; not required for school entry.

Also, no child should start their day without breakfast. Studies have demonstrated that students perform much better by starting their day with some nutrition. Although morning schedules are often rushed and time for breakfast can be challenging, students might want to consider carrying a nutritious snack with them.

Prescription medication **MUST** be brought to the Health Room for safe-keeping according to District policy. However, students here at WRHS are allowed to carry small amounts of over-the-counter medications in correctly labeled bottles i.e. Tylenol, Ibuprofen, Midol, cough drops.

We encourage students who need to use inhalers and/or EpiPens to carry them. They need to be correctly labeled and parent permission must be on file. Extra inhalers and/or EpiPens may also be stored in the Health Room.

# Enrollment Information

## ACTIVITY FEES:

High School Participation Fees are listed below with per family maximum of \$200.00

ACTIVITY	STUDENT FEE	ACTIVITY	STUDENT FEE
Baseball	\$75.00	Boys Swimming	\$25.00
Boys Basketball	\$75.00	Boys Tennis	\$25.00
Football	\$75.00	Cheerleading	\$25.00
Girls Basketball	\$75.00	Cross Country	\$25.00
Softball	\$75.00	Girls Soccer	\$25.00
Bowling	\$50.00	Girls Swimming	\$25.00
Boys Golf	\$50.00	Girls Tennis	\$25.00
Drama	\$50.00	Model UN	\$25.00
Girls Golf	\$50.00	Dance Team	\$25.00
Volleyball	\$50.00	Quiz Bowl	\$25.00
Wrestling	\$50.00	Track	\$25.00
Boys Soccer	\$25.00		

## FIRST-TIME KANSAS STUDENTS

Students age 9 and under attending a Kansas school for the first time must provide a written statement of health based on an assessment in the previous 12 months. Students will be granted a reasonable amount of time to obtain the statement or face possible exclusion from school and being reported to SRS for child neglect.

## ADDITIONAL INFORMATION

For more information on health requirements including immunizations, please contact the nurse at your child's school. In addition to the vision and hearing done in our schools, there will now be a free dental screening clinic provided for Auburn-Washburn students. In compliance with Kansas State Statute 72-5201, students will be screened unless the parent prefers to opt out of the screening.

### Freshman and New Student Orientation Tuesday, August 12, 2025

8:00 – 9:00	Opening Session in Auditorium
9:00 – 9:45	Club Introduction
9:55 – 11:25	Advisory
11:30 – 12:10	Lunch
12:15 – 12:25	1st Hour
12:30 – 12:40	2nd Hour
12:45 – 12:55	3rd Hour
1:00 – 1:10	4th Hour
1:15 – 1:25	5th Hour
1:30 – 1:40	6th Hour
1:45 – 1:55	7th Hour
2:00 – 2:15	ADVISORY
2:30 – 2:55	Closing Session in Auxiliary Gym

ALL Freshman are required to attend and all NEW students are welcome to attend.

### All Students- Full Day Wednesday, August 13, 2025

1st Hour	7:55 - 8:43
2nd Hour	8:48 - 9:36
3rd Hour	9:41 - 10:29
Advisory	10:33 - 11:00
4th Hour	11:05 - 11:53
5th Hour	11:58 - 1:16
1st Lunch	11:53 - 12:23
2nd Lunch	12:22 - 12:52
3rd Lunch	12:51 - 1:21
6th Hour	1:21 - 2:09
7th Hour	2:14 - 3:02

# ◆ Administrative Notes

---

## Parents New to WRHS Meeting

There will be a meeting on Wednesday, August 20th at 5:30 P.M. in Auditorium for the parents of any student new to WRHS. This would include all 9<sup>th</sup> graders' parents and all other new 10th, 11th, and 12th graders' parents. A variety of items will be discussed and a significant amount of time to answer questions will be allocated.

## Fall Open House

The annual WRHS Fall Open House is also scheduled for Wednesday, August 20th. It will begin at 6:30 P.M. following the New Parent Meeting. We encourage all parents to attend this event and meet your student's teachers for the 2024-2025 school year. The evening will begin with an assembly of parents at 6:30 P.M. in the Auditorium, after which parents will follow their student's schedules. Students need not attend with their parents. Refreshments will be provided at the conclusion of the evening.

## Parent Portal

Parents have the ability to access their student's grades and scores through a computer software "Parent Portal." The high school monthly newsletter and student directory are also available on this site. Parents new to the district will receive information and a password for Parent Portal at registration in August.

## Telephone Messages - Emergencies Only

To avoid making unnecessary classroom interruptions, the High School's office staff has been instructed to deliver student messages from parents or guardians that are only of the utmost in importance. These would include, but not be limited to:

1. Any emergency
2. Doctor and dental appointments of which the student is unaware.

## School Safety A Priority

The Highway Patrol has set up a state-wide telephone number for people to call in and anonymously report a threat to school safety. The number is 1-877-626-8203.

## PLC - Professional Learning Communities

PLC - District Early Release dates.

FIRST SEMESTER	
September 17th	November 5th
October 1st	December 10th

SECOND SEMESTER	
January 14th	April 15th
February 25th	May 6th

## Directory Information

The USD 437 board and administration have determined that the following data will be designated "directory information":

- a. student's name, address, telephone number, date of birth, and parent's name
- b. student's participation in officially recognized school activities and sports
- c. the weight, height and grade of members of athletic teams
- d. date of attendance
- e. scholarships and awards received
- f. the most recent previous school district attended by the student

This information is considered public information, which may be released by the school district without parent's prior consent. Patrons have until September 1, 2025 to inform the school district that any or all of the directory information about their student should not be released without parent's prior consent.



# Administrative Notes

---

## Attendance News

Direct Line: 339-4150

Attendance Fax Line: 339-4125 (Address Fax: c/o Attendance)

Proper procedure must be followed when a student is absent or needs to leave school early:

1. The Attendance Office can not interrupt the classroom to pull a student out of class unless it is an emergency. Your assistance in helping us eliminate disruptions to the learning environment is appreciated. It is not advisable to wait until the last minute to call and get your student out of school—if you need to have your student released early, again please **PLAN AHEAD!** You need to give the Attendance Office at least one passing time (one hour notice) to page your student so they can come to the Attendance Office to pick up their “Permit to Leave the Building” pass in between classes.
2. You can leave a voice message on the Attendance phone line for all types of absences but, do not leave a message for an immediate “time sensitive release.” You need to talk to someone in Attendance to ensure your student is released at the proper time.
3. ALL STUDENTS ARRIVING AFTER 8:00 A.M. MUST CHECK IN AT THE ATTENDANCE OFFICE. Just a reminder: students must provide the proper verification of their whereabouts when away from school for any type of medical or general appointment, long-term absences, etc. Verification must be given to the Attendance Office upon the student’s return to school.
4. Parents are responsible for calling the Attendance Office on the day their student is absent. If the absence is not confirmed within 24 hours, the absence will be unexcused and consequences will be assigned.
5. As a courtesy for parents, the district will send an e-mail alert out at 11:00 a.m. and 1:00 p.m. for students being marked absent for 3 hours or more on any given day. Please keep in mind, attendance for your student’s absence will not be entered in Infinite Campus (Parent Portal) until later in the day, therefore, whether you have called or not, you may still receive these e-mails. If you have already called, you can simply disregard. If you have not already called Attendance, please take the opportunity to do so at your earliest convenience.
6. Reminder: Absences of three days or more require an Extended Absence Form that must be completed and returned to the Attendance Office before being gone. Students can pick up this form from Attendance.

As always, we strive to serve your attendance needs in a friendly and positive manner. Your cooperation in following these attendance procedures is greatly appreciated.

## Attendance Policy

A student’s attendance record is a very important part of his/her permanent record. Students with regular attendance will be more successful in their classes. Students are expected to be present and punctual for all classes throughout the year. The responsibility of school attendance is with the student and his/her parents.

When a student is absent it is the responsibility of the parents to call the Attendance Office (339-4150) on the day of absence. The call should be made before 9:30 AM. The Attendance Office is open at 7:00 AM for calls.

Any student who checks into school after 8:00 AM must first report to the Attendance Office and receive an ADMIT to class. Any student who is counted absent for first hour will be presumed absent for the entire school day if they do not report to the Attendance Office and get an admit slip.

Students who miss school because of an UNEXCUSED absence will be required to complete the daily work but will not be given credit. Exams and major assignments must be made up by the student in order to receive credit.

The SCHOOL will determine whether the absence is excused or unexcused. Board policy allows USD 437 to accept only the following as valid reasons for excusing an absence:

1. Personal illness- short or long-term illness (verified by notification from doctor).
2. Medical appointment- appointment for medical treatment (an appointment card must accompany the student upon return and be given to the attendance clerk).
3. Family crisis.

# Administrative Notes

---

## Attendance Policy-Continued...

4. Extended absences- (i.e.: family vacation) when expressly requested by the parents or guardian and prior arrangements have been made in preparation for the absence as defined in the Student Handbook.
5. Participation in a district-approved or school-sponsored activity.
6. Obligatory religious observances.

Within a semester grading period, students must attend class, or a school-approved activity, a minimum of 90% of the periods the class meets to routinely receive credit. Failure to attend a minimum of 90% will not affect the grade given in any class, but will result in no credit being granted - despite the grade - should attendance fall below 90%. If a student is unexcused absent for more than the first ten minutes of class, the student is counted absent.

If attendance falls below 90% due to exceptional circumstances, a request can be made to determine whether or not credit will be granted. If a student or parent request an attendance review to gain credit for a class in which absences are excessive, they will have to account for ALL absences, excused and unexcused. There will be no differentiation between excused and unexcused absences when computing total absences in any class. Exemptions from the attendance policy may be granted on a case-by-case basis upon receipt of a medical doctor's attestation that the student's absences were medically necessary. Other unusual circumstances may also be considered at the discretion of administration.

Parents/guardians will be notified by the attendance office when the student has accumulated 75% and exceeded 100% of the allowed absences. Notification will be made:

- 5 absences (a Parent Courtesy Letter )
- 100% equals 10 absences (Notification by mail or email) Parent/Student must contact their Assistant Principal for an attendance review or credit will be lost.

## ELECTRONIC SIGNALING DEVICES

Washburn Rural High School enjoys a statewide reputation for educational excellence. This reputation is the product of the dedication of our student body, an outstanding instructional staff, a school philosophy of high expectations for all and diligence in minimizing interruptions and distractions during the instructional day. While not all electronic devices pose the same risk of disruption to the learning environment, it has become necessary to develop a policy that governs the use of some of the more intrusive. To this end:

- Students may possess or use personal electronic signaling devices (cell phones, iPods, iPads,/tablets, Apple watches etc.) on school campus provided that such devices do not disrupt the educational program or school activity and are not used for illegal or unethical activities such as cheating on assignments or tests, bullying or accessing pornographic materials.
- Electronic signaling devices shall be turned off and kept out of sight during class time or at any other time as directed by a school district employee, except when otherwise permitted, for educational purposes, by the teacher, administration or in school policy.
- Violations of this policy shall be subject to progressive discipline. If a student's use of an electronic signaling device causes a disruption as determined by a staff member, the student will be directed to turn off the device. On subsequent offenses, the device may be confiscated, a discipline point assigned and the device returned to the student at the end of the class period, school day or activity. A student's right to carry such devices may be revoked, by administration, for subsequent offenses. Other consequences outlined in the school discipline policy may be applied when appropriate for any misuse of said electronics.

# Administrative Notes

---

## ELECTRONIC SIGNALING DEVICES

Confiscated electronic signaling devices shall be stored by school district employees in a secure manner.

NO STUDENT SHALL USE AN ELECTRONIC SIGNALING DEVICE WITH CAMERA, VIDEO OR VOICE RECORDING FUNCTIONS IN A WAY OR UNDER CIRCUMSTANCES WHICH INFRINGE UPON THE PRIVACY RIGHTS OF OTHER MEMBERS OF THE SCHOOL COMMUNITY. STUDENTS MAY BE HELD PERSONALLY LIABLE FOR THE DISSEMINATION OF ELECTRONIC MATERIALS THAT INFRINGE UPON OTHER INDIVIDUALS' PRIVACY RIGHTS.

- Students are responsible for personal electronic signaling devices they bring to school. The district shall not be responsible for loss, theft or destruction of any such device brought onto school property, except that it shall be the responsibility of the school to ensure the safekeeping of any confiscated devices.

## DRESS CODE AND PERSONAL APPEARANCE

The general atmosphere of a school must be individually and collectively conducive to learning. If a student's attire becomes a disruptive factor in the educational process, a staff member will ask the student to make the necessary changes. Acknowledging that schools are not exclusively social environments and that the business of learning is conducted within them, student attire should reflect that reality. All clothing should be worn in the manner for which it was designed. The following list is prohibited, but not all-inclusive:

- Clothing which reveals parts of the body which are not usually exposed or visible in quasiprofessional settings or typical work environments.
- No clothing or body adornments with offensive, sexually suggestive, vulgar, profane, ethnically derogatory messages, pictures, or symbols, illegal substances, drug paraphernalia, tobacco, alcohol, or depictions or symbols of violence.
- No potentially hazardous articles of jewelry or articles on clothing, such as chains or studded bands, or have sharp points, etc.
- No clothing or styles identified to be associated with gangs or illegal activities.
- No outdoor clothing or accessories, such as headgear, capes, blankets, hoodies, sunglasses, jackets or coats that make it difficult for staff to quickly identify students or which may pose a danger, distraction, disturbance to the school environment is allowed.

The final determination as to whether clothing is acceptable or not will be made by the administration. The considerations for these judgements will be made in accordance with the aforementioned stipulations

# Athletics & Activities

---

## Fall Athletic Activities

The first day of practice for fall sports is Monday, August 18, 2025. There will be a Fall Orientation Meeting at 1:00 p.m. in the auditorium. You need to have your sports physical and signed concussion form turned in to the Athletic Office prior to the first practice. You may turn your forms in at enrollment. STUDENTS WITHOUT A VALID KSHSAA SPORTS PHYSICAL DONE ON OR AFTER 5/1/25 WILL NOT BE ALLOWED TO PRACTICE AND TRYOUT UNTIL ONE IS TURNED IN.

<u>Sport</u>	<u>Head Coaches</u>	<u>Email</u>	<u>Phone#</u>
Cross Country	Matt Swedlund	swedlmat@usd437.net	785-221-2966
Football	Steve Buhler	buhleste@usd437.net	785-339-4191
Girls' Golf	Jared Goehring	goehrjar@usd437.net	785-339-4141
Boys' Soccer	Brian Hensyel	hensybri@usd437.net	785-339-4242
Girls' Tennis	Michelle Rose	rosemic@usd437.net	785-339-4286
Girls' Volleyball	Kevin Bordewick	bordekev@usd437.net	785-339-4169

## 2025-2026 Bell Schedules

### WRHS Regular Schedule

<u>Period</u>	<u>Start-End</u>
1	7:55-8:43
2	8:48-9:36
3	9:41-10:29
Advisory/Club	10:33-11:00
4	11:05-11:53
5	11:58-1:16
	Lunch 1- 11:53-12:23
	Lunch 2- 12:22-12:52
	Lunch 3- 12:51-1:21
6	1:21-2:09
7	2:14-3:02

### PLC Schedule (Early Release)

<u>Period</u>	<u>Start-End</u>
1	7:55-8:33
2	8:38-9:16
3	9:21-9:59
4	10:04-10:42
5	10:47-12:06
	Lunch 1- 10:42-11:12
	Lunch 2- 11:12-11:42
	Lunch 3- 11:41-12:11
6	12:11-12:49
7	12:54-1:32

# ◆ World Language



In April, German students in Honors Levels 3 and 4 and Spanish students in Honors Level 3 and 4; Accelerated 3 and 4; and IB Juniors took the AAPPL language proficiency exam in hopes of earning their Kansas Seal of Biliteracy. The Seal of Biliteracy requires a level of proficiency of Intermediate or Higher in both English and their second language. The Seal of Biliteracy is awarded to Seniors. We would like to congratulate the following World Language recipients of the Kansas Seal of Biliteracy:

Nancy (Caroline)	Alvarez Chedzoy
Ananya	Anaparthi
Kavinayashri	Chidambaranathan
Braden	Daugherty
Kailey	Dorzweiler
Israel	Escobar
Emma	Garcia
Logan	Glinka
Kaitlin	Jackson
Addyson	Kaberline

Bristol	Karr
Jacob	Kerry
Julianna	Lightcap
Cooper	Malmstrom
Hazel	May
Benjamin	Nikkel
Aditi	Nimishakavi
Xoaquin	Overbey
Jack	Rogers
Miriam	Smith

We would also like to congratulate the following underclassmen who earned a Global Seal of Biliteracy in English and their second language. The seal requires an intermediate level of proficiency in each of the languages. The recipients of the Global Seal of Biliteracy are:

Kennedy	Wright
Stella	Berry
Madelynn	Bauer
Anisha	Dhir
Eric	Navarrete
Tanner	Haddock

Marion	Alvarez-Chadoy
Saylor	Classi
Madyson	Nelson
Andres	Morao-Jaspe
Genevieve	Miller
Siegel	Sven



# ◆ Career and Technical Education

---

## End of the Year Faculty Luncheon -Provided by the Culinary Arts Students



Culinary Arts Project: A Hands-On Approach to Developing Key Skills in the Kitchen

In a recent culinary project, students were tasked with creating a complete menu, costing out each dish, and executing the plan in a real-world simulation. The project was designed to test a variety of skills and concepts that are essential in the culinary industry, from menu planning to customer service and teamwork. The outcome of the project was to help students develop a range of competencies, including food safety, knife skills, cooking techniques, and business acumen, all while working in a dynamic, team-based environment.

### The Project Structure

Each student was responsible for presenting a menu, which included an appetizer, entrée, and dessert. The key to menu selection was understanding what would work best within the constraints of time, budget, and skill level. Students also needed to cost out each item, considering the cost of ingredients and overall pricing. The goal was to design a menu that was both financially viable and executable by the class's skill set.

To manage the orders, students developed a Google Form to capture customer selections. Once the orders were in, the students were divided into three distinct roles: Front of the House, Back of the House, and Delivery.

**Front of the House:** These students were responsible for managing meal pick-ups, ensuring a smooth customer experience, and handling customer inquiries or concerns.

**Back of the House:** The back-of-the-house team focused on plating entrees and desserts to ensure they were aesthetically pleasing and in line with food safety standards.



**Delivery:** The delivery team ensured that each order, including the entrée, dessert, condiments, and utensils, was delivered on time and to the correct location.

This team-based structure ensured that each student had the opportunity to contribute to the process while focusing on specific tasks that align with industry roles.

This culinary project not only allowed students to apply their classroom knowledge in a practical setting, but it also helped them develop key skills that are essential for a successful career in the culinary arts. By working on a menu from start to finish, managing customer orders, and collaborating with their peers, students gained hands-on experience in a variety of areas, including food safety, cooking techniques, customer service, and business management. These experiences will serve as a strong foundation as they continue to build their culinary careers.

# ◆ Career and Technical Education

## Engineering Boat Project: Floating Ideas into Reality

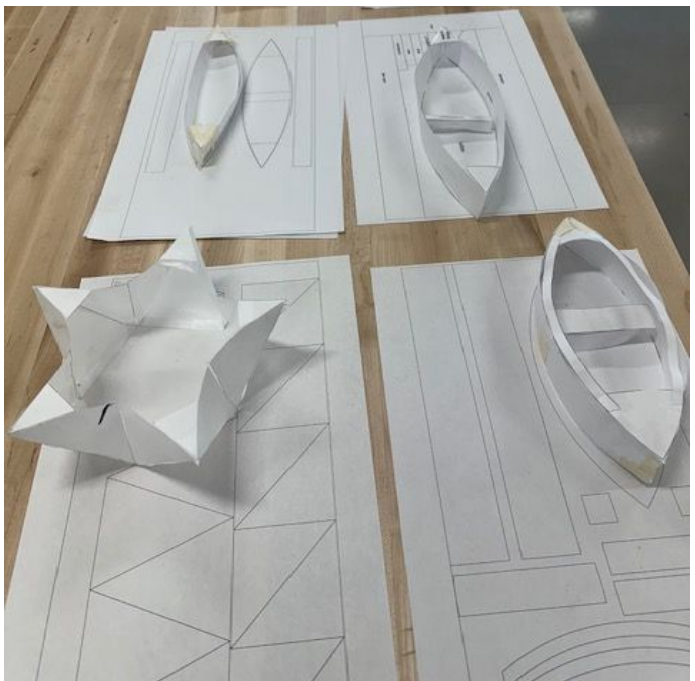
In a hands-on challenge that blended creativity, collaboration, and engineering principles, students embarked on the Engineering Boat Project—an engaging experience designed to simulate real-world problem-solving. The goal? Design and build a boat capable of floating for at least two minutes in a kiddie pool.

The project began in the digital realm, where students used AutoCAD to draw precise models of their boats. These digital designs were then brought to life using a CNC machine, which cut out the physical components from the selected materials. With the pieces ready, the teams moved on to assembly—using zip ties for structural fastening and caulking to waterproof the seams and joints.

Throughout the process, students balanced innovation with practicality. Some experimented with unconventional shapes or materials, while others prioritized stability and simplicity. The ultimate test came during the float trials, where the boats were launched into the pool and observed for buoyancy and durability.

The results were a blend of triumph and learning. Roughly half of the class succeeded in building boats that met the two-minute floating requirement. For others, the experience highlighted the importance of time management, clear planning, and testing designs before final assembly.

In the end, the Engineering Boat Project proved to be more than just a race to float—it was a valuable opportunity for students to apply STEM concepts, develop teamwork skills, and understand the iterative nature of engineering. As many discovered, even a sunken boat can teach powerful lessons.





# Career and Technical Education

## WRHS Business Department Awards Scholarships to Outstanding Students

On Tuesday, May 6th, (WRHS) Business Department proudly awarded four scholarships to exceptional students who have demonstrated outstanding dedication to business education. This year's scholarship recipients are: Cora Genovese, Emerie Catlin, Marianne Christensen, and Evelyn Diaz Reyes.



Now in its 13th year, the WRHS Business Scholarship program continues to recognize students who have shown a strong commitment to business studies and plan to pursue careers in the field. To be considered, applicants were required to submit a comprehensive application detailing their business coursework, extracurricular involvement, and related experiences. Each student also wrote a personal essay describing their business background and outlining their future goals in the business world.

The selection process was conducted by members of the school's Finance and Marketing Advisory Committee, who reviewed each application thoroughly to identify the most deserving candidates.

The WRHS Business Department congratulates Cora, Emerie, Marianne, and Evelyn on their achievement and wishes them continued success as they move forward in their academic and professional journeys.

\$1,000 Silver Lake Bank Scholarship winners were also announced during this event: Cora Genovese, Evelyn Diaz-Reyes, and Hazel May were this year's winners!

The three \$1,000 Silver Lake Bank Scholarships are funded through their Loyalty Debit Card program. Silver Lake Bank is pleased to offer the Loyalty Debit Card Program in partnership with local School Districts and the Topeka Zoo. The Loyalty Debit Card can be used at ATMs or to make purchases just like a regular debit card. Silver Lake Bank will give back to the featured partner \$.05 per each signature card transaction. There is no cost to the school, zoo, or you!

[Click here to learn more!](#)



# ◆ Career and Technical Education

## Junior Achievement Scholarship Winner



The Kansas Insurance Department granted \$10,000 each to three organizations for a financial literacy essay contest. Jobs for America's Graduates Kansas, Junior Achievement of Kansas, and the Kansas Council for Economic Education each entered a selection of essays from Kansas students who participated in their financial literacy programs offered in over 200 high schools across the state. The students with the top three essays from each organization were awarded a share of \$10,000 in scholarships. The first-place essay from each organization then advanced to compete for an overall contest winner, and a share of an additional \$10,000.

The contest finalists and their awards are:

- 1st Place, \$5,000 – Anusha Chaturvedi, Olathe North High School (KCEE)
- 2nd Place, \$3,000 – Joel Umana Jimenez, Newton High School (JAG-K)
- 3rd Place, \$2,000 – Cora Genovese, Washburn Rural High School (Junior Achievement)

"This year's winners showed strong understanding of investment fraud red flags and what steps to take to stop scammers," said Schmidt. "Congratulations to all the winners this year, and I encourage them to use what they have learned to help others."

The winning students receive their scholarships in addition to the \$5,000 scholarship they won in the first round of the contest. The students receive the award money in the form of a 529 savings account to use for the advancement of their education. Previously announced winners from each participating organization can be found online at [insurance.kansas.gov/news](https://insurance.kansas.gov/news). For more information about the Kansas Insurance Department or to learn more about making smart investment decisions, visit [insurance.kansas.gov](https://insurance.kansas.gov) and [SmartInvestKS.com](https://SmartInvestKS.com).

**For the 2025-26 school year, WRHS will be offering classes in the following Career Clusters and Pathways**

- **Agriculture, Food & Natural Resources:** Animal Science, Health and Related Industries, Diversified Agricultural Science, Natural Resources & Environmental Sustainability and Plant Science & Industry Operations
- **Information Technology:** Media Design & Communications and Programming & Software Development
- **Business Finance:** Finance
- **Marketing:** Marketing
- **Manufacturing:** Manufacturing
- **Education & Training:** Teaching/Training
- **Health & BioSciences:** Biotechnology and Health Science
- **Law, Public Safety, Corrections & Security:** Corrections, Security, Law & Law Enforcement
- **Architecture & Design:** Construction & Design
- **Hospitality & Tourism:** Restaurant & Event Management

Visit the [CTE website](#) for more information: or WRHS counselor page -[WRHS Course Planning Guide](#)

# ◆ Career and Technical Education

---

## Hour of Finance Challenge - Kansas State Winner!

The Intuit for Education team congratulates Washburn Rural High School as the Kansas State Champion of the Intuit Hour of Finance™ Challenge! Mr. Brian McFall sponsored the event which involved the following courses: Banking and Finance / Investing, IB / Honors Business Management, and Consumer and Personal Finance. The school was presented with a trophy to commemorate the event.



The Intuit Hour of Finance is a program designed to promote financial literacy among students. Here's a breakdown of what it's about:

### 1. Goal:

- To equip students with essential money skills and increase their financial confidence.
- Intuit aims to help 50 million students become financially literate by 2030 through Intuit for Education initiatives, which include the Hour of Finance.

### 2. How it works:

- Hour of Finance Challenge: This is a national initiative encouraging schools to dedicate at least one hour to financial education during Financial Literacy Month (April).
- Interactive learning: Uses games, activities, and real-world scenarios to engage students and make learning about finance fun.
- Free curriculum: Intuit for Education provides free, customizable curriculum and resources for teachers, including lesson plans and an online game called Prosperity Quest.
- Competition: The Hour of Finance Challenge allows schools to compete against each other, with prizes awarded for participation and performance.

### 3. Key elements of the program:

- Relevant content: Teaches essential financial concepts like budgeting, credit, taxes, saving, and investing.
- Accessible: Open to all schools and independent learners, promoting inclusive financial education.
- Engaging: Uses interactive games and challenges to make learning about finance enjoyable.

In essence, the Intuit Hour of Finance aims to make financial literacy more accessible, engaging, and relevant for students, ultimately empowering them to make informed financial decisions in the future. For more information please visit

<https://www.intuit.com/solutions/education/hour-of-finance/challenge/>



# ◆ Career and Technical Education



The 2025 DECA International Career Development Conference took place in Orlando, FL on April 26-30! Over 26,000 DECA members, advisors and corporate partners have gathered in Orlando for the pinnacle event of the DECA year. Students got to spend the four days creating new connections, engaging in challenging new adventures and celebrating incredible achievements. DECA is an integral component of classroom instruction that helps members apply their learning and connect to business. This year, DECA encouraged students to *BE THE ONE* through this organization! Students participated in DECA's Chapter Campaigns, created innovative new products in the DECA Idea Challenge, attended career pathway conferences, earned Gold-Level Certification for School-based Enterprises, and conquered the competition to make it all the way to the international stage at #DECAICDC. Students also took advantage of every opportunity DECA offered over the week, such as meeting incredible corporate partners, colleges and universities, and vendors in the exhibit hall, and sharing experiences on social media using #DECAICDC.



## **SBE ACADEMY + COMPETITION**

The SBE Academy is held annually at DECA's International Career Development Conference. The following students from our WRHS business programs (The Shack, WRHS Bank and Common Grounds) attended this year's conference: Nicholas He, Marianne Christensen, Kailyn Petersen, Cora Genovese, and Keegan Knudtson. Dynamic academies are offered exclusively to Gold-Certified SBEs and featured guest speakers and workshop sessions related to all aspects of running an SBE. Students have the opportunity to engage with other SBE students and learn from each other through interactive activities and networking. The SBE competition requires students to give an oral presentation in front of judges focused on one of the 10 business standards featured in the written chapter certification project. The competition topic rotates each year to give students a more in-depth understanding of the performance indicators and concepts covered in the certification project.

# ◆ Career and Technical Education

## DECA SBE PROGRAMS SUPPORT 21ST CENTURY SKILLS AND EMPLOYABILITY DEVELOPMENT

Experience working within a DECA SBE provides students the opportunity to learn skills that aren't necessarily learned in the classroom. DECA SBE provides students with the same valuable learning experience of any co-op or part-time job without requiring students to leave school. By working in a real business within the school, students are provided real-world experience vital to developing 21st century skills and preparing for future careers.

	Critical Thinking & Problem Solving	Collaboration & Teamwork	Communication	Creativity & Innovation
Chapter Certification	Reflect critically on learning experiences and processes.	Assume shared responsibility for collaborative work, and value the individual contributions made by each team member.	Use communication for a range of purposes (e.g., to inform, instruct, motivate and persuade).	Be open and responsive to new and diverse perspectives; incorporate group input and feedback into the work.
SBE Academy	Identify and ask significant questions that clarify various points of view and lead to better solutions.	Demonstrate ability to work effectively and respectfully with diverse teams.	Listen effectively to decipher meaning, including knowledge, values, attitudes and intentions.	Develop, implement and communicate new ideas to others effectively.
SBE Competition	Use various types of reasoning (inductive, deductive, etc.) as appropriate to the situation.	Exercise flexibility and willingness to be helpful in making necessary compromises to accomplish a common goal.	Articulate thoughts and ideas effectively using oral, written and nonverbal communication skills in a variety of forms and contexts.	Demonstrate originality and inventiveness in work and understand the real-world limits of adopting new ideas.





# ◆ Career and Technical Education

DECA's School-based Enterprise (SBE) Program has a number of educational activities designed to connect classroom curriculum with hands-on learning experiences by working in the SBE learning lab. SBE programs are designed to:

- Establish greater understanding of selected career cluster knowledge statements and performance indicators.
- Allow students to earn recognition for their achievements.
- Provide experiences to develop 21st century skills including communication, critical thinking, collaboration, and creativity.
- Prepare students for higher learning and future careers. Utilizing the SBE programs available through DECA further enhances authentic, experience-based learning for your students and can provide a framework for developing relevant curriculum that strengthens the connection between the classroom and real-world work experience.

## WHAT IS A SCHOOL-BASED ENTERPRISE?

A school-based enterprise (SBE) is an entrepreneurial operation in a school setting that provides goods/ services to meet the needs of the market. SBEs are managed and operated by students as hands-on learning laboratories that integrate National Curriculum Standards in marketing, finance, hospitality or management. SBEs provide realistic and practical learning experiences that reinforce classroom instruction. SBEs can sell to consumers through a permanent location, a mobile kiosk or through Internet marketing. Products may include spirit wear, food and beverage items, school supplies, signs and banners and more, while other SBEs provide services such as creative design, advertising sales and more.



## CHAPTER CERTIFICATION

The chapter certification program reinforces the integration of National Curriculum Standards into the learning-lab environment of SBEs. Students reflect upon their work in the SBE through documentation of 10 key business standards (instructional areas) and performance indicators from the Business Administration Core, the Marketing Career Cluster, and the Merchandising Pathway of National Curriculum Standards including the following: 1. Financial Analysis 2. Operations 3. Marketing-Information Management 4. Market Planning 5. Product/Service Management 6. Pricing 7. Distribution/Channel Management 8. Promotion 9. Selling 10. Human Resources Management.

Chapters submit a written project online to DECA for evaluation by judges in an effort to earn the national distinction of a DECA Gold-Certified SBE. The process provides an opportunity to analyze your school-based business, determine your SBE's strengths and weaknesses, and showcase the learning outcomes of your students. Earning gold certification also opens the door to other opportunities available through DECA including the SBE Academy and competition at DECA's International Career Development Conference.

# ◆ Career and Technical Education



Sponsored by Silver Lake Bank

## Jr. Blue Crew Gives Away \$500 Investment

On Friday, May 9th the WRHS Bank presented the \$500 investment grand prize. Students and staff as well as bank employees, gathered around the WRHS Bank in the commons to draw for the winner. Only the members of the Junior Blue Crew who deposited \$10.00 each month, from September to April, were eligible for this grand prize. This year we had a record amount of students and staff eligible for the giveaway! In addition to the grand prize giveaway we also reward members with gift cards each month.

The winner was Aiden Bengel, a senior at WRHS. Congratulations to all Jr. Blue Crew members who were eligible and keep saving - next year could be your year! Stop by the WRHS Bank to learn more.



### Open your account at on the first day of school!

WRHS Bank and staff will be available to open accounts and process transactions. Students and staff are available every day during lunch. Students can create a bank account at WRHS for a variety of reasons:

1. Build a savings account and earn interest each month!
2. Cash and Deposit Checks.
3. Have money available during the school year for miscellaneous items and events that come up!
4. Be eligible for monthly prizes!
5. Deposit every month to be able to win a \$500 investment at the end of the year!

**Open a checking account and get your  
free WRHS Jr. Blues Debit Card**

**Skip the PIN and your school WINS!**

Each debit card transaction  
not requiring your PIN  
provides \$.05 to the WRHS  
scholarship fund.

*Support your WRHS Jr. Blues  
and open an account today!*

[www.silverlakebank.com](http://www.silverlakebank.com)



WRHSCOMMONGROUNDS.SQUARE.SITE

# COMMON GROUNDS

**ORDER ONLINE, PICKUP IN STORE!**



HOURS  
Monday-Friday

BEFORE SCHOOL: 7:00 - 7:45  
DURING LUNCH: 11:27 - 1:11







# Looking to host a SPIRIT WEAR STORE?

Let the students from WRHS - The Shack help!

## Garment Pricing

	Gildan / Hanes SS Tee	Gildan / Hanes Long Sleeve Tee	Gildan / Hanes Crewneck Sweatshirt	Gildan / Hanes Hoodie
S-XL	\$12.00	\$16.00	\$20.00	\$24.00
2XL	\$14.00	\$18.00	\$22.00	\$26.00
3XL	\$16.00	\$20.00	\$24.00	\$28.00

\* Contact us for prices on other brands including: Bella Canvas, Badger, Adidas, and many more!\*

\*\* Ask us about custom hats as well!\*\*



Email us  
[theshack@usd437.net](mailto:theshack@usd437.net)

Visit Our Website  
[ruralspirit.square.site](http://ruralspirit.square.site)



# ◆ The Chimes Yearbook

---

2025 Yearbooks will be distributed at enrollment.

Purchase your 2026 yearbook at enrollment! Prices are at their lowest.

2026 Enrollment: \$60 or \$65 Personalized

**Order Online:** [www.yearbookordercenter.com](http://www.yearbookordercenter.com) - school code: 33333

**2025 SENIOR Yearbook Delivery:** Graduates, you'll need to pick up your yearbooks at enrollment too. If you can't make it, you can have parents or siblings pick up your book during enrollment. Or you may call the high school (339-4100) and ask to have your book delivered to the main office. Please call 24 hours prior to pick up.

**Mailing Yearbooks:** If you would like your yearbook mailed, the cost is \$20, which covers postage and materials. Call (339-4100) or send payment (5900 SW 61st Street, Topeka, KS 66619) and your updated mailing address. Books are usually mailed in mid-August.

**Yearbook Portraits:** InterState Studios be mailing portrait package information to homes prior to enrollment. We encourage all students to get a portrait taken for school publication purposes. You are under no obligation to purchase these photos. If you want your student to be included in the Chimes yearbook, they must take a picture during enrollment or at one of the two retake days. **\*This is different than their ID photo.** If a student does not take an Inter-State portrait, they will not be included in the people section of the yearbook.\* Seniors may submit their own image.

**Please plan to have your yearbook portrait taken at enrollment July 30-31.**





# SENIOR PORTRAITS

## Senior Portrait Specifications for Yearbook

The WRHS Yearbook staff encourages every senior to submit a senior portrait. These images are placed in the PEOPLE section of the book in alphabetical order. Pictures are due to the yearbook staff on/before the **first Friday in December**.

### OPTION #1: Inter-State Studios

**Inter-State is the school portrait photographer.**

**This is at no cost to the student. The yearbook staff will have access to these images. Senior portraits can be taken during enrollment or during the retake date in the fall. Please see the WRHS school calendar for specific portrait dates.**

Example:



### OPTION #2: Select Your Photographer & Submit Your Image

Students/families do this option on their own.

We would prefer your image be sent electronically. Please send the ORIGINAL (non-cropped) file in JPEG format. Name it with the student's first and last name.

Example:



Send your portrait file to:

**[wrhsporraits@usd437.net](mailto:wrhsporraits@usd437.net)**

(Important: send Senior Salute images in a separate email to [wrhssalutes@usd437.net](mailto:wrhssalutes@usd437.net))

- Head-and-shoulders shots are preferred.
- Attire must follow school handbook.
- Plain backgrounds preferred.
- No studio imprint (I.D.) on file.
- Photos must be vertical (or they will be cropped to fit a vertical space).

Please note: We will post a list of seniors who HAVE turned in portraits after the deadline. The list will be posted outside the Counseling Office and announcements will be made. **Seniors are responsible** for checking the list to make sure portraits have been delivered and received by the yearbook staff.

**We cannot be responsible if we do not receive your photo.**

# Interstate Yearbook Pictures

**ENROLLMENT**

JULY 30-31

**7AM-7PM**

**FRESHMEN  
&  
FACULTY**

TUESDAY, AUGUST 12

**7:30 AM  
- 1:00 PM**

**RETAKES**

MONDAY, OCTOBER 13

**10:30 AM  
- 11:00**

# 2026

## WRHS YEARBOOK

Name: \_\_\_\_\_

Grade:      9      10      11      12

Yearbook Prices: \$60.00 ☐

\$75 for available extra copies at 2027 enrollment

Name to appear on the cover (optional): \$5.00 ☐

\_\_\_\_\_

**Total \$** \_\_\_\_\_

Make checks payable to WRHS YEARBOOK

Check # \_\_\_\_\_

Paid Date \_\_\_\_\_

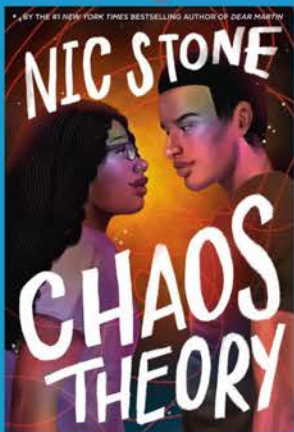
**Mail Order form & Payment to: WRHS Yearbook**  
**5900 SW 61<sup>st</sup> Street, Topeka, KS 66619**

**\*OR ORDER ONLINE!\***

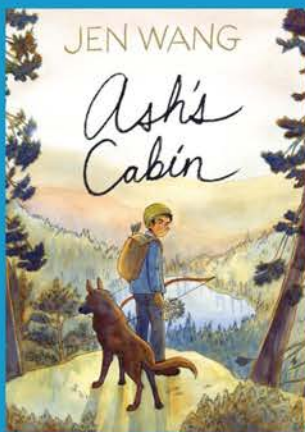
**[www.yearbookordercenter.com](http://www.yearbookordercenter.com)**  
**school code: 33333**



# Mrs. Finney's Hot Picks for Summer Reads!



Romance: Shelbi and Andy are both NOT okay. When an accident brings them together, and their connection blooms, it might end up burning too bright.



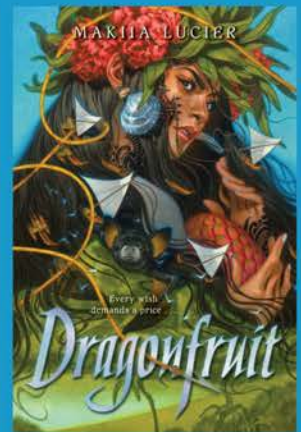
Graphic Novel: Ash feels alone in school, with their family, and in this world, so they make a plan to run away into the timber and live off the grid. What could go wrong?



Horror: Dearie and Cole, high school "queen bees" are the prime suspects of a returned serial killer look-alike threat, but what happens when they also become the targets?



Mystery: When a local girl is found dead after a ceremony on the Blackfeet reservation, four other teens are the suspect. A timely who-done-it digging into the issue of MMIW movement.



Fantasy: Hanalei has been living in exile, but when a chance to return home appears, Hanalei must protect her heritage, but also her heart.





# WRHS SUMMER CHROMEBOOK CARE

PLEASE REFER TO THE USD 437 TECHNOLOGY ACCEPTABLE USE  
POLICY (PG 39 OF STUDENT HANDBOOK). CHROMEBOOKS ARE  
FOR SCHOOL WORK, NOT GAMING, OR CHATTING WITH  
FRIENDS

NEVER STORE ITEMS  
BETWEEN A CLOSED  
CHROMEBOOK  
KEYBOARD & SCREEN!

STORE YOUR DEVICE  
SOMEWHERE SAFE - DO  
NOT LEAVE YOUR  
DEVICE IN A CAR!

KEEP ALL FOOD AND  
DRINK AWAY FROM YOUR  
CHROMEBOOK!

HANDLE WITH CARE:  
STUDENTS ARE RESPONSIBLE  
FOR ANY DAMAGES. COSTS  
RANGE FROM 19.00 -  
360.00.

IF THERE ARE MULTIPLE  
USD 437 DEVICES IN YOUR  
HOME - PLACE OBVIOUS  
LABELS ON THEM

IF YOU PLAN ON USING IT  
OVER THE SUMMER, CLEAR  
THE BROWSING HISTORY  
AT LEAST ONCE A WEEK!

PLUG IN, CHARGE,  
UPDATE, AND RESTART  
YOUR DEVICE BEFORE  
AUGUST!

YOU'RE ACCOUNTABLE  
FOR YOUR CHROMEBOOK  
& CHARGER, KEEP TRACK  
OF YOUR NUMBERS!



Connect with us @wrhslib for:

- technology support
- homework help
- reading recommendations
- area job openings
- school activities and more



<http://library.usd437.net> - Text 4 Help: 785-260-0015  
Mrs. Sandberg: sandbmar@usd437.net - Mrs. Finney: finnevic@usd437.net

# ◆ Air Force Junior ROTC

The Washburn Rural High School Air Force JROTC program is dedicated to building better citizens through a unique blend of aerospace education, leadership training, physical fitness, and community involvement. Open to all students in grades 9–12, our program fosters personal growth, teamwork, and responsibility in a structured but encouraging environment.

Cadets explore a wide range of subjects, including aviation history, space exploration, military customs, leadership principles, and life skills. Beyond the classroom, they participate in exciting field trips, service projects, and competitive teams such as Drill Team, Color Guard, Marksmanship, Rocketry, and Academic Bowl.

Whether leading the Cadet Corps, flying on military aircraft, or preparing for life beyond high school, our students gain confidence, discipline, and real-world experience, all without any military obligation. Join us and take flight in your future!

## WRHS AFJROTC Summer Camp

**All incoming AFJROTC cadets are  
eligible to attend.**

**21 - 25 July 2025**

**8:00 - 12:30**

**Meet In The Library!**

- Learn about drill & ceremonies
- Learn about flag respect
- Friendly competition
- Physical training
- Learn about the uniform
- Earn ribbons & awards

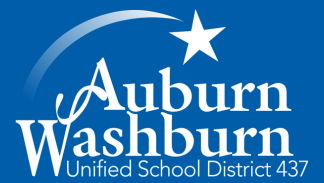
**Contact:**

**Lt Col Daniels:** [danieron@usd437.net](mailto:danieron@usd437.net)

**CMSgt Choate:** [choatcla@usd437.net](mailto:choatcla@usd437.net)

# Auburn-Washburn

## 2025-2026 Student Calendar



# 2025

### JULY

S	M	T	W	T	F	S
		1	2	3	4	5
6	7	8	9	10	11	12
13	14	15	16	17	18	19
20	21	22	23	24	25	26
27	28	29	30	31		

### AUGUST

S	M	T	W	T	F	S
					1	2
3	4	5	6	7	8	9
10	11	12	13	14	15	16
17	18	19	20	21	22	23
24/31	25	26	27	28	29	30

### SEPTEMBER

S	M	T	W	T	F	S
	1	2	3	4	5	6
7	8	9	10	11	12	13
14	15	16	17	18	19	20
21	22	23	24	25	26	27
28	29	30				

#### August

- 12 School Begins  
-Grades 1-7, 9 & New 10-12
- 13 School Begins  
-Grades 8 & 10-12
- 14 School Begins  
-Preschool & Kindergarten

#### September

- 1 No School - Labor Day
- 29 No School - Staff Professional Learning Day

#### October

- 9 End of First Grading Period
- 10 No School - Staff Work Day
- 15 Evening P/T Conferences
- 16 No School - P/T Conferences
- 17 No School

#### November

- 24-25 No School - Staff Professional Learning Days
- 26-28 No School - Thanksgiving

#### December

- 19 End of Second Grading Period
- 22-31 No School - Winter Break

#### January

- 1 No School - Winter Break
- 2 No School - Staff Work Day
- 19 No School - MLK Day

#### February

- 18 Evening P/T Conferences
- 19 No School - P/T Conferences
- 20 No School

#### March

- 12 End of Third Grading Period
- 13 No School - Staff Work Day
- 16-20 Spring Break

#### April

- 3 No School - Staff Professional Learning Day
- 6 Snow Make-Up Day (if needed)

#### May

- 21 Last Day of School

Auburn-Washburn USD 437  
5928 SW 53rd Street  
Topeka, KS 66610  
785-339-4000

[www.usd437.net](http://www.usd437.net)

### OCTOBER

S	M	T	W	T	F	S
			1	2	3	4
5	6	7	8	9	10	11
12	13	14	15	16	17	18
19	20	21	22	23	24	25
26	27	28	29	30	31	

### NOVEMBER

S	M	T	W	T	F	S
						1
2	3	4	5	6	7	8
9	10	11	12	13	14	15
16	17	18	19	20	21	22
23/30	24	25	26	27	28	29

### DECEMBER

S	M	T	W	T	F	S
	1	2	3	4	5	6
7	8	9	10	11	12	13
14	15	16	17	18	19	20
21	22	23	24	25	26	27
28	29	30	31			

# 2026

### JANUARY

S	M	T	W	T	F	S
				1	2	3
4	5	6	7	8	9	10
11	12	13	14	15	16	17
18	19	20	21	22	23	24
25	26	27	28	29	30	31

### FEBRUARY

S	M	T	W	T	F	S
1	2	3	4	5	6	7
8	9	10	11	12	13	14
15	16	17	18	19	20	21
22	23	24	25	26	27	28

### MARCH

S	M	T	W	T	F	S
1	2	3	4	5	6	7
8	9	10	11	12	13	14
15	16	17	18	19	20	21
22	23	24	25	26	27	28
29	30	31				

### APRIL

S	M	T	W	T	F	S
			1	2	3	4
5	6	7	8	9	10	11
12	13	14	15	16	17	18
19	20	21	22	23	24	25
26	27	28	29	30		

### MAY

S	M	T	W	T	F	S
					1	2
3	4	5	6	7	8	9
10	11	12	13	14	15	16
17	18	19	20	21	22	23
24/31	25	26	27	28	29	30

### JUNE

S	M	T	W	T	F	S
	1	2	3	4	5	6
7	8	9	10	11	12	13
14	15	16	17	18	19	20
21	22	23	24	25	26	27
28	29	30				

- School in Session
- Snow Make-Up Day (if needed)
- End of Grading Period

- Early Release Day
  - Elementary Dismissal: 2:15 pm
  - WRMS Dismissal: 1:20 pm
  - WRHS Dismissal: 1:32 pm
  - No school for Early Childhood Education

Approved by the Board of Education on 12/16/24

Subject to Negotiations