

Tips for Reading the Kansas Assessment Student Score Reports

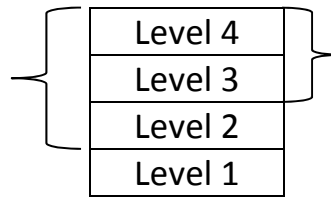


Performance Levels:

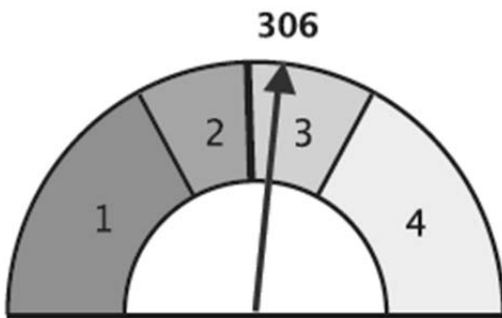
Results in English Language Arts (ELA) and Math for grades 3-8, 10 are reported on one of four performance levels.

Students in Levels 2, 3, and 4 are all described as meeting or exceeding grade level expectations while Levels 3 and 4 are considered being on track for college and career readiness.

At or Above Expectations for Grade Level



At or Above Expectations for College and Career Readiness



Performance Gauges:

Four performance gauges (example at left) will appear on the front of the report. The student's score is in the top gauge. The number indicates the performance level for the student.

The three smaller gauges show the school, district, and state median scores for the same assessment.

Student' Relative Areas of Strength (Claims):

Information on the back of the report shows student's relative strengths compared to the school, district, and state performance.

The black bars indicate the standard error (the range in which the student would likely perform if he or she took the test another time).

Scores in this section do not equate directly to the performance seen on the front of the report. They show relative performance on the "Claims" which are broad statements about student mastery of categories of the standards. They indicate portions of the assessment that were strengths for the student.

Student's Relative Areas of Strength

Grade 4	Claims	Score									
		101	103	105	107	109	111	113	115	117	119
Student	1	[Bar chart showing score around 109]									
	1-RL	[Bar chart showing score around 109]									
	1-RI	[Bar chart showing score around 109]									
	2	[Bar chart showing score around 111]									
School	1	[Bar chart showing score around 109]									
	1-RL	[Bar chart showing score around 109]									
	1-RI	[Bar chart showing score around 109]									
	2	[Bar chart showing score around 109]									
District	1	[Bar chart showing score around 109]									
	1-RL	[Bar chart showing score around 109]									
	1-RI	[Bar chart showing score around 109]									
	2	[Bar chart showing score around 109]									
State	1	[Bar chart showing score around 109]									
	1-RL	[Bar chart showing score around 109]									
	1-RI	[Bar chart showing score around 109]									
	2	[Bar chart showing score around 109]									